

标准规格

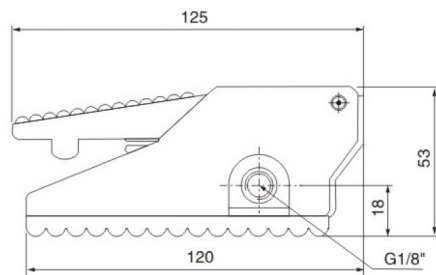
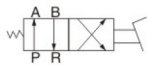
型号	FV420	FV320
工作介质	经40微米过滤的空气	
位通数	二位四通	二位三通
接口口径	进气=出气=G1/4" 排气=G1/8"	
动作形式	直动式	
使用压力范围	0~0.8MPa	
使用温度范围	-20~70℃	



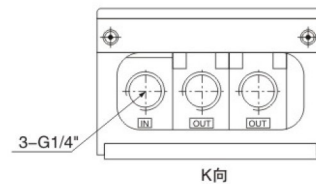
型号表示方法



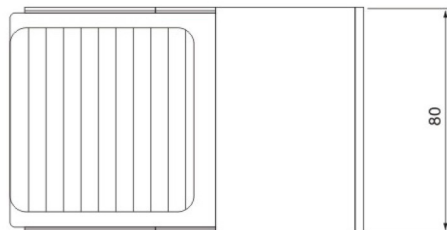
● FV420



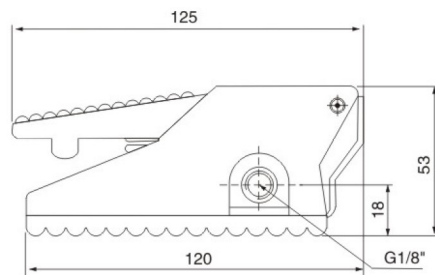
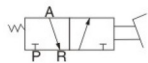
K



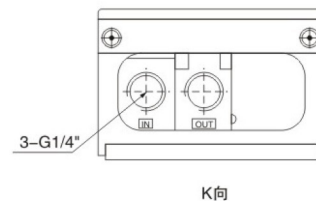
K向



● FV320



K



K向

